

# WARNING!



Be sure electrical power is OFF before and during installation or maintenance.  
The luminaire must be installed by a qualified electrician, in accordance with all applicable local codes.

Ensure that the rated luminaire voltage requirements are compatible with the available mains supply in which it will be installed.  
All LEDs are included in your lamp. Never touch the LED surface with your bare hands as this may reduce the life of your LED.  
Do not alter, relocate or remove any electrical component.

Line: OYSTER  
Family: PENDANT  
Description: OYSTER ACCORD PENDANT 1512

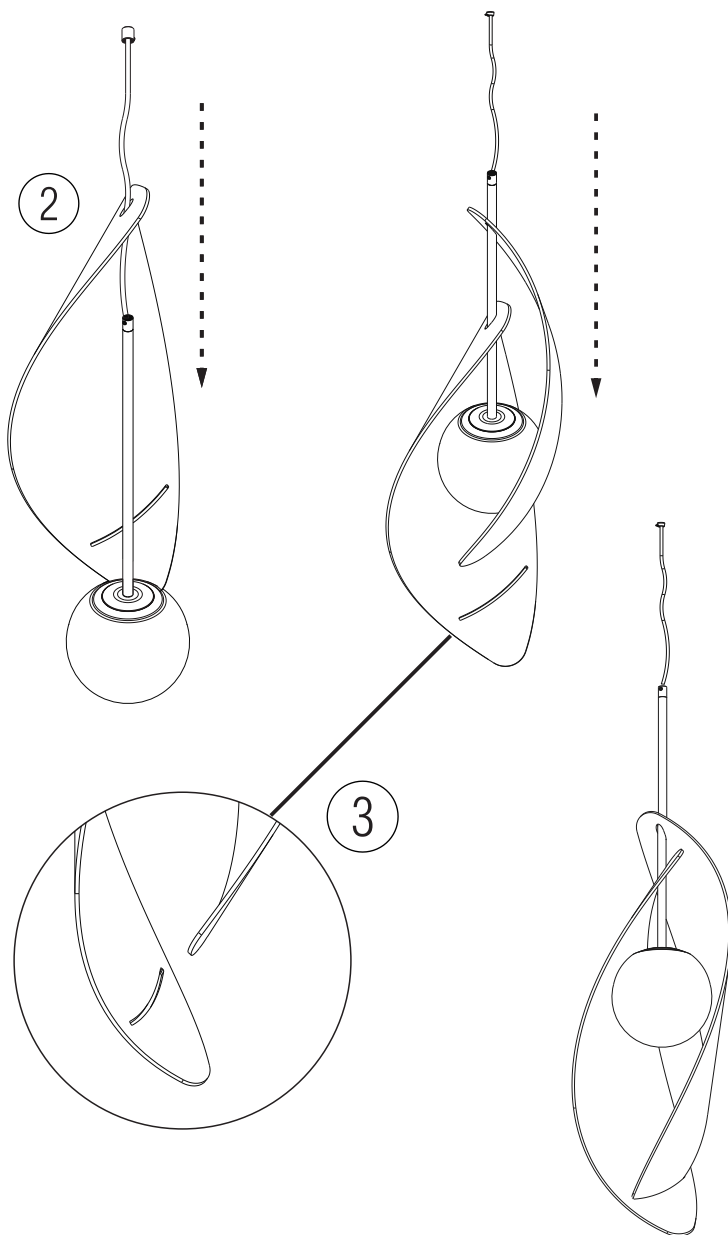
Input voltage: 120 - 240V  
Input frequency: 60Hz

Material: Natural Wood Vener and MDF.

IMPORTANT: The luminaire is fitted only for use of E26 A15 lightbulbs.

- 01 First, insert the petal with the cutout along the stem and adjust the height by moving it vertically to the desired position. Once adjusted, release the petal to lock it in place.
- 02 With the first petal installed, repeat the process with the other, this time aligning it through the cutout so that they interlock securely.

ø8mm /  
ø5/16"



PROVIDED SCREWS



# ATTENTION!



FAILURE TO COMPLY WITH THESE INSTRUCTIONS MAY CAUSE ACCIDENTS AND LOSS OF PRODUCT WARRANTY.  
It is recommended to read these instructions completely and carefully before proceeding.

SAVE THESE INSTRUCTIONS FOR FUTURE REFERENCE.

ACCORD Lighting guarantees coverage against manufacturing defects including electrical components and finishes, for a period of three years, under normal use, from the date of purchase. For warranty service, please contact your local dealer for further instructions. Proof of date of purchase will be required for validation of warranty service.

The responsibility of the manufacturer regarding the product warranty is related to the correct observation of the instructions contained in this manual.  
The manufacturer is not responsible for any damage to the product caused by accidents, alterations of any kind, improper usage or improper installation.  
See the website for additional warranty details.

ACCORD Lighting reserves the right to change the dimensions and specifications contained in this manual without prior notice, in accordance with its policy of continuous product improvement. Please, contact the manufacturer if additional information is necessary. The illustrations in this manual are for guidance only and may vary in scale, dimensions and model details.

## WARNING!



Be sure electrical power is OFF before and during installation or maintenance.  
The luminaire must be installed by a qualified electrician, in accordance with all applicable local codes.

Ensure that the rated luminaire voltage requirements are compatible with the available mains supply in which it will be installed.  
All LEDs are included in your lamp. Never touch the LED surface with your bare hands as this may reduce the life of your LED.  
Do not alter, relocate or remove any electrical component.

ø8mm /  
ø5/16"

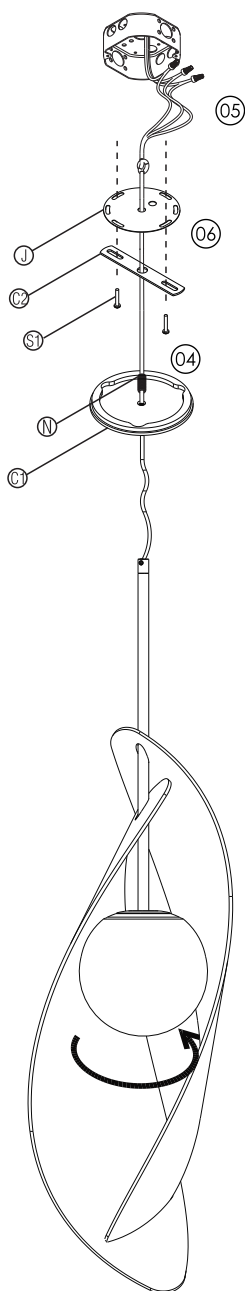
Line: OYSTER  
Family: PENDANT  
Description: OYSTER ACCORD PENDANT 1512

Input voltage: 120 - 240V  
Input frequency: 60Hz

Material: Natural Wood Vener and MDF.

**IMPORTANT:** The luminaire is fitted only for use of E26 A15 lightbulbs.

Read carefully all the assembling instructions below and turn OFF energy power before starting the installation.



- 03 Pass the energy cable through the strain relief (S) fixed in the canopy (C1), through the nipple (N), junction box cover (J) and crossbar (C2).
- 04 Make the electrical connections in accordance with all applicable local codes. This product must be installed in accordance with the applicable installation code by a person familiar with the construction and operation of the product, and the hazards involved
- 05
- 06 Screw the crossbar (C2) and junction box cover (J) in the junction box using the provided screws (S1).
- 07 Once the crossbar and junction box cover are fixed in the ceiling, screw the nipple (N) on it and insert the excess energy cable into the junction box through the strain relief (S).
- 08 Once the nipple is fixed on the junction box, screw the strain relief (S) on the nipple until the canopy is fixed and tight against the ceiling.
- 09 Adjust the height of the pendant and fasten the strain relief screw to lock the energy cable.
- 10 Install the compatible LED mini bulb (A-15) with an E-26 socket, MAX 25W.

Turn on the energy power, your luminaire is ready for use.

PROVIDED SCREWS



## ATTENTION!



FAILURE TO COMPLY WITH THESE INSTRUCTIONS MAY CAUSE ACCIDENTS AND LOSS OF PRODUCT WARRANTY.  
It's recommended to read these instructions completely and carefully before proceeding.

SAVE THESE INSTRUCTIONS FOR FUTURE REFERENCE.

ACCORD Lighting guarantees coverage against manufacturing defects including electrical components and finishes, for a period of three years, under normal use, from the date of purchase. For warranty service, please contact your local dealer for further instructions. Proof of date of purchase will be required for validation of warranty service.

The responsibility of the manufacturer regarding the product warranty is related to the correct observation of the instructions contained in this manual.  
The manufacturer is not responsible for any damage to the product caused by accidents, alterations of any kind, improper usage or improper installation.  
See the website for additional warranty details.

ACCORD Lighting reserves the right to change the dimensions and specifications contained in this manual without prior notice, in accordance with its policy of continuous product improvement. Please, contact the manufacturer if additional information is necessary. The illustrations in this manual are for guidance only and may vary in scale, dimensions and model details.